

Killing me softly

Roberta Flack

Intro

Am11



D7/A



Gadd11/D



D7sus4



D7



Am7



D7/A



Musical notation for the first system of the Intro, measures 1-4. The key signature is one sharp (F#) and the time signature is 4/4. The first measure starts with a *mf* dynamic marking. The notation includes a treble clef, a key signature of one sharp, and a 4/4 time signature. The melody consists of quarter and eighth notes, with some chords held for longer durations. There are also some rests and slurs.

TAB notation for the first system of the Intro, measures 1-4. The strings are labeled T (Treble), A (Acoustic), and B (Bass). The fret numbers are: Measure 1: T: 3, A: 5, B: 5; Measure 2: T: 3, A: 5, B: 5; Measure 3: T: 7, A: 8, B: 5; Measure 4: T: 5, A: 5, B: 0.

Am7



D/F#



G



Musical notation for the second system of the Intro, measures 5-7. Measure 5 starts with a *let ring* instruction. The notation includes a treble clef, a key signature of one sharp, and a 4/4 time signature. The melody continues with quarter and eighth notes, including a triplet in measure 7.

TAB notation for the second system of the Intro, measures 5-7. The strings are labeled T (Treble), A (Acoustic), and B (Bass). The fret numbers are: Measure 5: T: 2, A: 0, B: 0; Measure 6: T: 3, A: 2, B: 2; Measure 7: T: 0, A: 0, B: 3.

Cmaj7/G



Am7



D9/F#



Musical notation for the third system of the Intro, measures 8-10. Measure 8 starts with a *let ring* instruction. The notation includes a treble clef, a key signature of one sharp, and a 4/4 time signature. The melody continues with quarter and eighth notes, including a triplet in measure 10.

TAB notation for the third system of the Intro, measures 8-10. The strings are labeled T (Treble), A (Acoustic), and B (Bass). The fret numbers are: Measure 8: T: 0, A: 2, B: 3; Measure 9: T: 0, A: 2, B: 0; Measure 10: T: 0, A: 1, B: 2.

Killing me softly by

Em Cmaj7/E Am7

11 12 13

TAB

3	7	5	3	5	0	1	3	0	1
5	7	5	0	5	4	0	0	2	0
4	7	5	4	4	5	3	0	0	0
5	7	5	4	5	3	0	0	0	0
0				0					

D6/F# G5 B7 B7

14 15 16

TAB

0	2	0	1	3	3	3	3	4	4	5	2
2	2			0				2	2	2	4
0				0				4	2	4	2
2				3				2	4	4	2

Em A7sus4 Am7 D7/F#

17 18 19

TAB

3	3	3	3	5	4	3	1	2	2	2	2	0	1
5	5	5	5			0	0	1	1	1	1		
4	4	4	4			2	2	2	2	2	2		
0						0	0	2	2	2	2		
0						0	0	2	2	2	2		

G Dadd11/F# Em A7add13 A7 A7

20 21 22

TAB

0	3	5	5	5	5	2	3	2	0	5
0	0	4	4	4	4			2	2	2
0	4	5	5	5	5			0	0	0
3	2	0						2	0	0

Dsus4



C6(♭5,9)



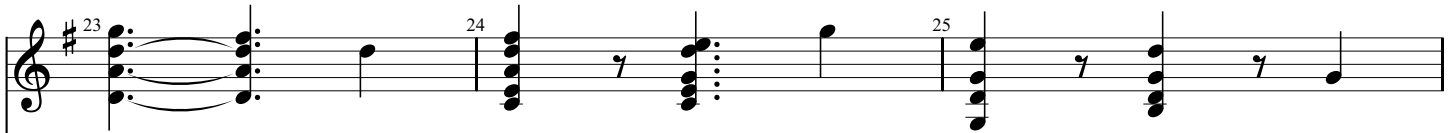
Cadd9



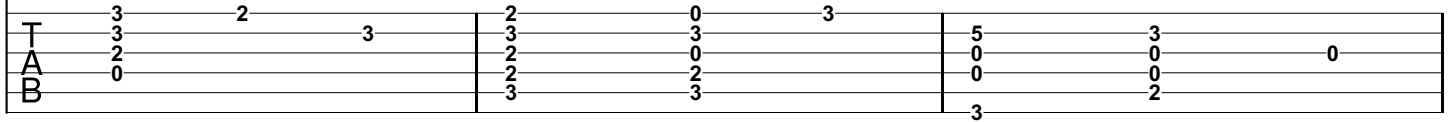
Em7/G



G/B



let ring-----|



A7sus4



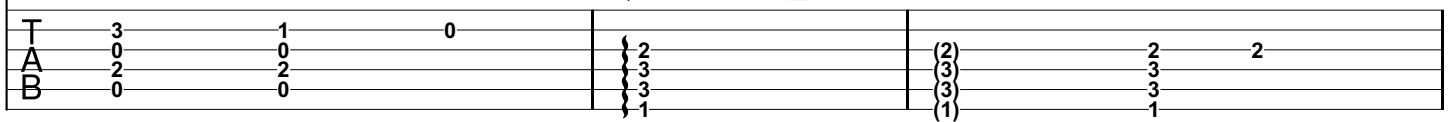
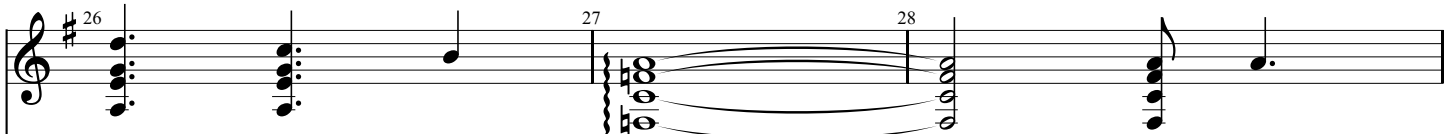
Am7



F



F



E

